

# MODEL T6A-B

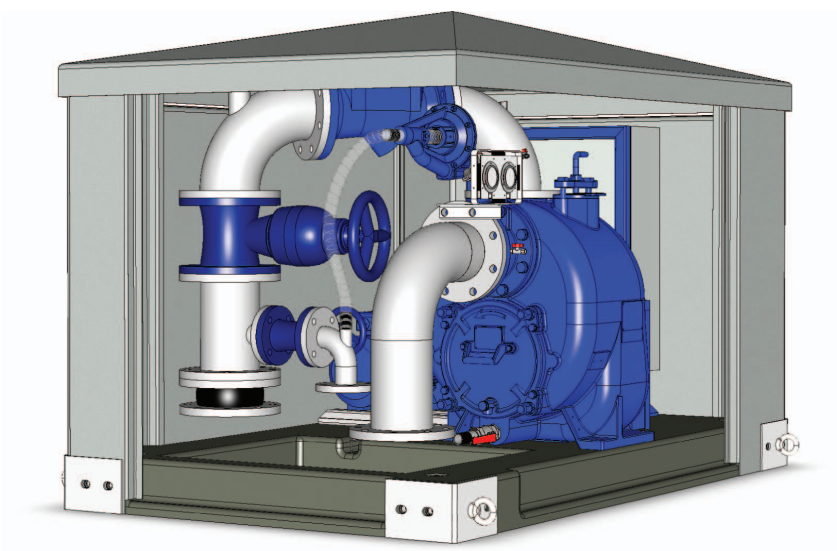
## 120 X 200 CM



### FIBERGLASS ENCLOSURE

- Overall L x W x H : 2105x1300x1430mm
- Enclosure : Composite Honeycomb Sandwich Panels
- Base : Concrete covered with Polyester
- Removable Hinged Doors (External Safety Lock on two Doors)
- Removable Roof and Corners
- Four Lifting Eye Bolts
- Openings through the Base and Central Gutter for Electric Cables
- Large Groutable Opening in the Base for Pipes and Plumbing Accessories
- Ground Anchoring Provisions in the Base, for M20 Anchor Stems
- Forced Air Ventilation System
- External Gelcoat, Grey Colour RAL 7047
- Total Weight : approx. 2000 kg
- Options :
  - Soundproof Insulation
  - Brick or Stone Facings on the Doors and Corners

### CUTAWAY



Specifications and illustrations are subject to change without notice / © Copyright by Gorman-Rupp Europe 2015.

## SELF PRIMING PUMP T6A-B

ES



**Quantity:** 1

**Size:** 6"x6" DN150 DIN Flanges

**Maximum Capacity:** 320 m<sup>3</sup>/h

**Maximum Head:** 32 mWC

**Maximum Self Priming Lift:** -7,6 m

**Maximum Solids:** 76 mm

**Model available in Different Materials:** T6A3S-B /FM, T6A60S-B /FM, T6A61S-B /FM, T6A71S-B /FM and T6A65S-B /FM. Refer to The Gorman-Rupp Specification sheet for details on the available pumps.

JAN 2015 GRE

## DRIVING SYSTEM

V-belt Transmission: 1 x IEC Electrical Motor, IP55, 50 Hz, Efficiency Class IE2

Safety Transmission Guard

## PUMP EQUIPMENT

- 1 x Air Release Valve Gorman-Rupp GRP 33-07 with Isolation Ball Valve and Transparent Hose
- 1 x Pump Casing High Temperature Shutdown Kit
- 1 x Suction and Discharge Pressure Gauge, mounted on a Non-Vibrating Support
- 1 x Pump Casing Drainage System, with Isolation Ball Valve and Transparent Hose

## PIPINGS AND PIPING ACCESSORIES

> All Flanges are DIN PN10

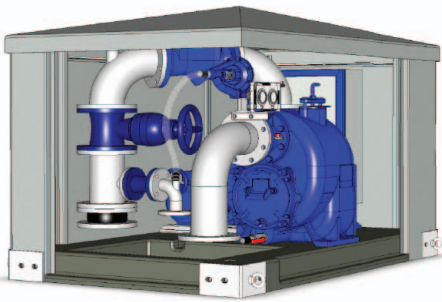
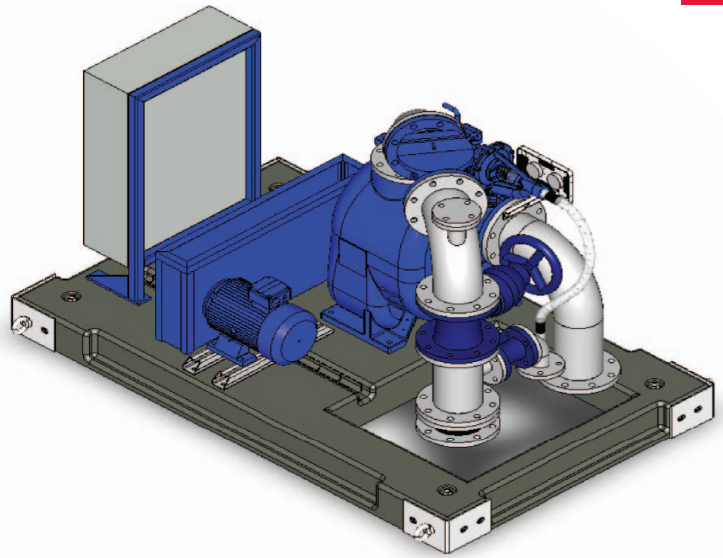
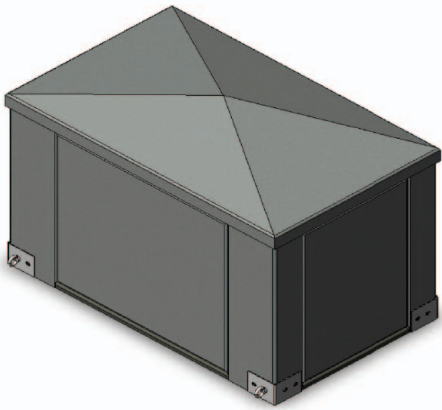
- 1 x Suction Pipe in Stainless Steel 304, DN150 Flanged
- 1 x Common Discharge Pipe in Stainless Steel 304 ended by an Expansion Joint, DN150 Flanged
- 1 x Non-Return Valve, DN150 Flanged
- 1 x Eccentric Plug Valve, DN150 Flanged
- 1 x Access Cover on the Discharge Pipe, DN50 Flanged
- 1 x By-Pass Pipe in Stainless Steel 304 on the Discharge Pipe with Eccentric Plug Valve, DN50 Flanged

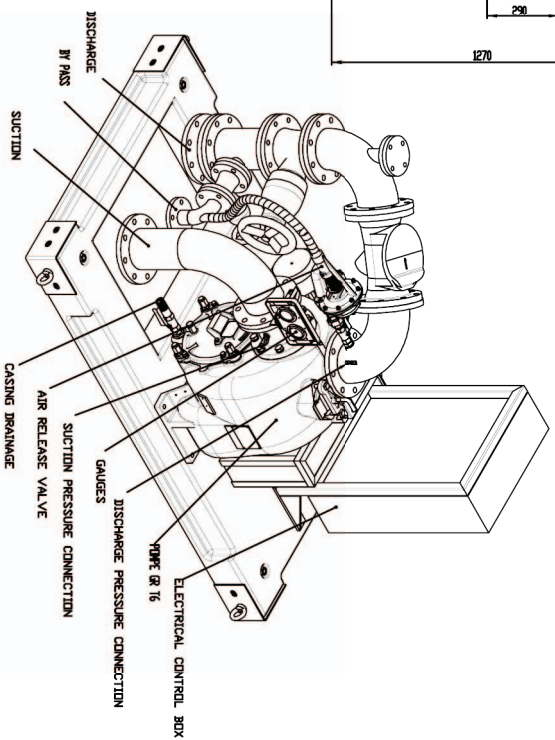
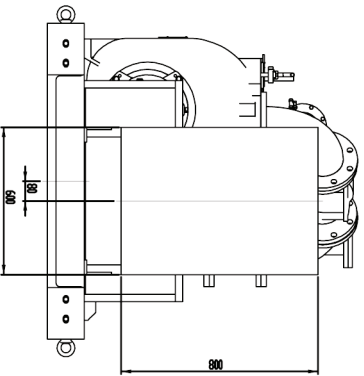
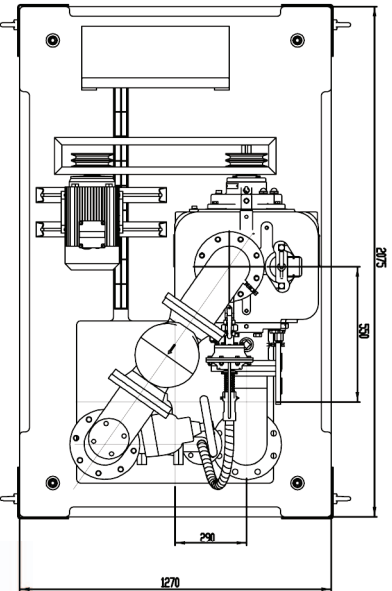
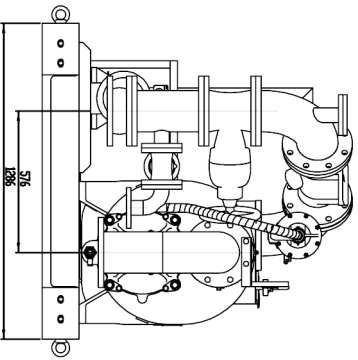
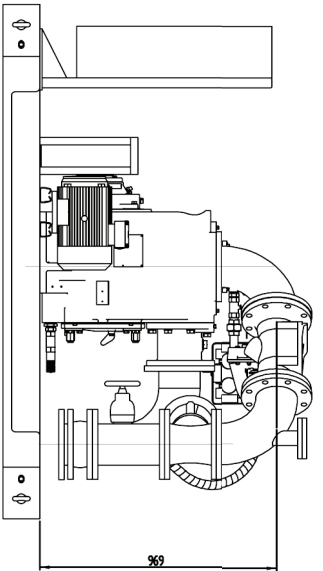
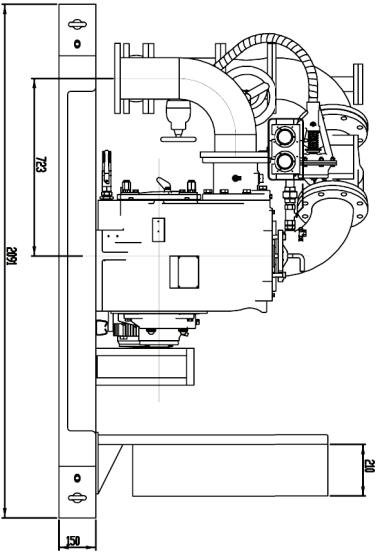
## OTHER INTERNAL EQUIPMENT

- 1 x Electrical Heating Element 750W / 1x230V with Adjustable Thermostat
- 1 x Extraction Fan (325m<sup>3</sup>/h)
- 1 x Electrical Plug CEE 2P+T 230V 16A
- 1 x Internal Lighting

*ELECTRICAL BOX WITH AUTOMATIC LEVEL CONTROL (AVAILABLE AS AN OPTION)*

# MODEL T6A-B





GORMAN-RUPP EUROPE  
FOMONTINGHED 50  
SLOOTERWEG 1  
The Netherlands  
TEL: +31 206 12 27 74  
FAX: +31 206 12 20 57

Above Ground Lift Station  
Type 120x200  
1 x Pump Gorman-Rupp T6A-B/FM